

**RECORDED CRIME & DISORDER UPDATE**

This report sets out the recorded crime and anti-social behaviour figures for April – December 2012 compared to the same period in 2011/12. Overall, total recorded crime has reduced by 4.8% and ASB incidents have reduced by 22.7%

**Crime Statistics for Stockton April 2012 – December 2012**

Crime Statistics	April - December			
	2012/13	2011/12	Change	% Change
Violence against the person	1680	1547	133	8.6%
Robbery	54	59	-5	-8.5%
Sexual	148	165	-17	-10.3%
House Burglary	427	412	15	3.6%
Other Burglary	559	600	-41	-6.8%
Theft of Motor Vehicle /TWOC	165	217	-52	-24.0%
Theft from Motor Vehicle	387	424	-37	-8.7%
Vehicle Interference	43	52	-9	-17.3%
Other Theft	2600	2760	-160	-5.8%
Criminal Damage	1702	1895	-193	-10.2%
Forgery & Fraud	194	199	-5	-2.5%
Drug Offences	344	414	-70	-16.9%
Other Crime	112	92	20	21.7%
<b>TOTAL</b>	<b>8415</b>	<b>8836</b>	<b>-421</b>	<b>-4.8%</b>
Violent Crime	1882	1771	111	6.3%
Vehicle Crime	595	693	-98	-14.1%
Serious Acquisitive	1040	1071	-31	-2.9%
Shoplifting	1033	921	112	12.2%

The majority of crimes are showing a decrease when compared to the previous year. However, the categories of note with an increase relate to violence, house burglary and shoplifting.

The increase in violence relates mainly to a peak in offending during August and October (in particular DV). House burglary showed an increase in September, but reduced during October 2012. Shoplifting continues to be a concern showing an increase of 12.2%.

## ASB Statistics for Stockton April 2012 – October 2012

ASB incidents have reduced by 22.7% compared to the same period last year.

ASB Statistics	April - December			
	2012/13	2011/12	Change	% Change
AS21 - Personal	3116	3847	-731	-19.0%
AS22 - Nuisance	5835	7399	-1564	-21.1%
AS23 - Environmental	242	649	-407	-62.7%
<b>TOTAL ASB</b>	<b>9193</b>	<b>11895</b>	<b>-2702</b>	<b>-22.7%</b>

The following table shows the rate per thousand population for total crime and ASB across the Tees Valley. Stockton continues to have the lowest rate per thousand population of all districts for total crime, and has now accumulated the lowest rate for ASB incidents, this has improved upon the last reporting period which showed Redcar & Cleveland to be the lowest.

Rate per 1,000 population		
District	ASB	Total Crime
Hartlepool	55.4	53.3
Middlesbrough	64.1	76.8
Redcar & Cleveland	47.8	43.8
<b>Stockton</b>	<b>47.6</b>	<b>43.6</b>

### Breakdown of Publicly Reported and Police Generated Crime

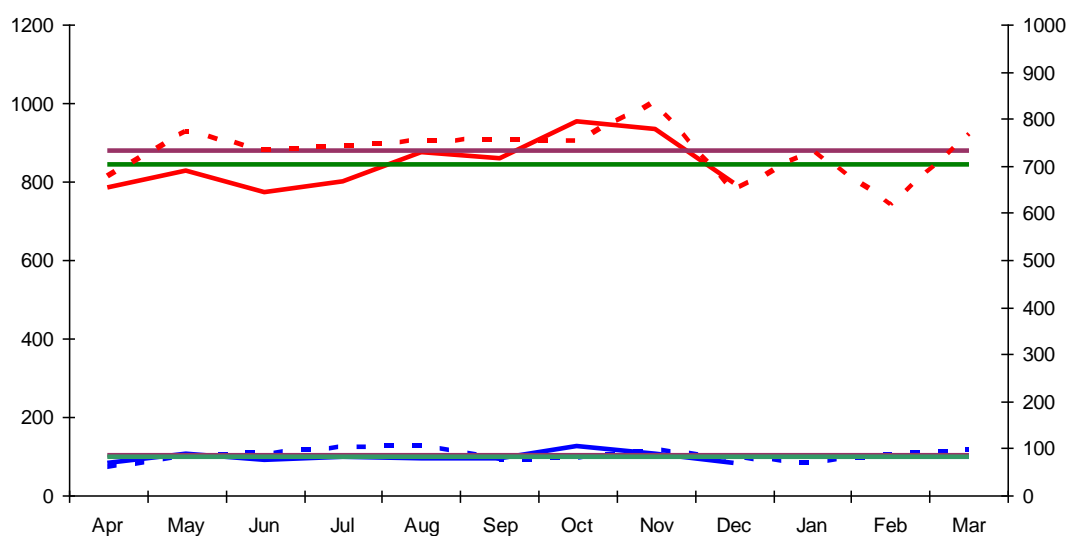
During this year Cleveland Police adopted a new way of measuring performance focussing on the reduction of publically reported crime in line with national best practice to promote positive policing. Publically Reported Crime is those crimes that are reported by the public. A separate record is kept of 'Police Generated Crime', ie the crimes that are recorded following proactive policing such as drug raids, public order arrests etc. The tables below and the graph that follows show both of these categories from April to December 2012.

During this period both ways of recording are showing similar decreases with a 4.9% decrease in publically reported crime, and a 4.8% decrease in police generated crime year to date.

Crime Statistics Publicly Reported	April – December 2012			
	2012/13	2011/12	Change	% Change
<b>Violence against the person</b>	1447	1331	116	8.7%
<i>Violence with injury</i>	859	848	11	1.3%
<i>Violence without injury</i>	588	483	105	21.7%
<b>Sexual offences</b>	147	165	-18	-10.9%
<i>Rape</i>	38	41	-3	-7.3%
<i>Other Sexual offences</i>	109	124	-15	-12.1%
<b>Acquisitive Crime</b>	4316	4607	-291	-6.3%
<i>Burglary - Domestic</i>	428	411	17	4.1%
<i>Burglary - Non domestic</i>	560	600	-40	-6.7%
<i>Robbery - personal</i>	47	51	-4	-7.8%
<i>Robbery - Business</i>	7	8	-1	-12.5%
<i>Vehicle Crime (Inc Inter.)</i>	595	693	-98	-14.1%
<i>Shoplifting</i>	1033	921	112	12.2%
<i>Other Acquisitive</i>	1646	1923	-277	-14.4%
<b>Criminal damage and Arson</b>	1690	1889	-199	-10.5%
<b>Publicly reported offences</b>	<b>7600</b>	<b>7992</b>	<b>-392</b>	<b>-4.9%</b>

Crime Statistics Police Generated	April – December 2012			
	2012/13	2011/12	Change	% Change
<b>Public Disorder</b>	258	221	37	16.7%
<b>Drug offences</b>	344	415	-71	-17.1%
<i>Trafficking of drugs</i>	76	86	-10	-11.6%
<i>Possession/Use of drugs</i>	268	329	-61	-18.5%
Crime Prevented / Disrupted	94	86	8	9.3%
Other State based / Non Victim	31	40	-9	-22.5%
<b>Police Generated offences</b>	<b>727</b>	<b>762</b>	<b>-35</b>	<b>-4.6%</b>
Fraud and Forgery	89	85	4	4.7%
<b>Total Recorded Crime</b>	<b>8416</b>	<b>8839</b>	<b>-423</b>	<b>-4.8%</b>

## Publicly reported and Police Generated Offences Tracking Report



- Actual 2012/13 - Publicly Reported
- - - - Performance 2011/12 – Publically Reported
- Actual 2012/13 – Police generated
- 2012/13 average
- 2011/12 average
- - - - 2011/12 Police generated

### Police generated and publicly reported and crime in comparison within the Tees Valley

The following tables show the number of police generated and publicly reported crimes, with rates included in brackets displaying comparison to the other three Tees Valley sub regions.

The rates calculated have been generated using the 2010 population statistics as follows:

- Stockton – on –Tees: 192,900
- Hartlepool: 91,900
- Middlesbrough: 139,200
- Redcar: 139,300

Colour coordination denotes a green as best and a red as worst in performance.

Crime Statistics Police Generated	April – October 2012			
	Stockton	Hartlepool	Middlesbrough	Redcar
Public Disorder	258 (1.3)	170 (1.8)	403 (2.8)	172 (1.2)
Drug offences	344 (1.7)	321 (3.4)	580 (4.1)	257 (1.8)
<i>Trafficking of drugs</i>	76 (0.3)	66 (0.7)	63 (0.4)	54 (0.3)
<i>Possession/Use of drugs</i>	268 (1.3)	255 (2.7)	517(3.7)	203 (1.4)
Crime Prevented / Disrupted	94 (0.4)	85 (0.9)	143 (1.0)	79 (0.5)
Other State based / Non Victim	31 (0.1)	27 (0.2)	45 (0.3)	21 (0.1)
<b>Police Generated offences</b>	<b>727 (3.7)</b>	<b>603 (6.5)</b>	<b>1171 (8.4)</b>	<b>529 (3.7)</b>
Fraud and Forgery	89 (0.4)	51(0.5)	74 (0.5)	49 (0.3)
<b>Total Recorded Crime</b>	<b>8416 (43.6)</b>	<b>490 (153.3)</b>	<b>10692 (76.8)</b>	<b>6104 (43.8)</b>

Crime Statistics Publicly Reported	April 2012- October 2012			
	Stockton	Hartlepool	Middlesbrough	Redcar
<b>Violence against the person</b>	<b>1447 (7.5)</b>	<b>991 (10.7)</b>	<b>1802 (12.9)</b>	<b>909 (6.5)</b>
<i>Violence with injury</i>	859 (4.4)	589 (6.4)	1049 (7.5)	562 (4.0)
<i>Violence without injury</i>	588 (3.0)	402 (4.3)	753 (5.4)	347(2.4)
<b>Sexual offences</b>	<b>147 (0.7)</b>	<b>57 (0.6)</b>	<b>130 (0.9)</b>	<b>64 (0.4)</b>
<i>Rape</i>	38 (0.1)	30 (0.3)	41 (0.2)	21 (0.1)
<i>Other Sexual offences</i>	109 (0.5)	27 (0.2)	89 (0.6)	43 (0.3)
<b>Acquisitive Crime</b>	<b>4316 (22.3)</b>	<b>2172 (23.6)</b>	<b>5717 (41.0)</b>	<b>3055 (21.9)</b>
<i>Burglary - Domestic</i>	428 (2.2)	221 (2.4)	746 (5.3)	292 (2.0)
<i>Burglary - Non domestic</i>	560 (2.9)	264 (2.8)	583 (4.1)	488 (3.5)
<i>Robbery - personal</i>	47 (0.2)	19 (0.2)	110 (0.7)	21 (0.1)
<i>Robbery - Business</i>	7 (0.03)	7 (0.07)	7 (0.05)	5 (0.03)
<i>Vehicle Crime (Inc Inter.)</i>	595 (3.0)	283 (3.0)	1022 (7.3)	486 (3.4)
<i>Shoplifting</i>	1033 (5.3)	555 (6.0)	1470 (10.5)	667 (4.7)
<b>Other Acquisitive</b>	<b>1646 (8.5)</b>	<b>823 (8.9)</b>	<b>1779 (12.7)</b>	<b>1096 (7.8)</b>
<b>Criminal damage and Arson</b>	<b>1690 (8.7)</b>	<b>1027 (11.1)</b>	<b>1798 (12.9)</b>	<b>1498 (10.7)</b>
<b>Publicly reported offences</b>	<b>7600 (39.3)</b>	<b>4247 (46.2)</b>	<b>9447(67.8)</b>	<b>5526 (39.6)</b>